

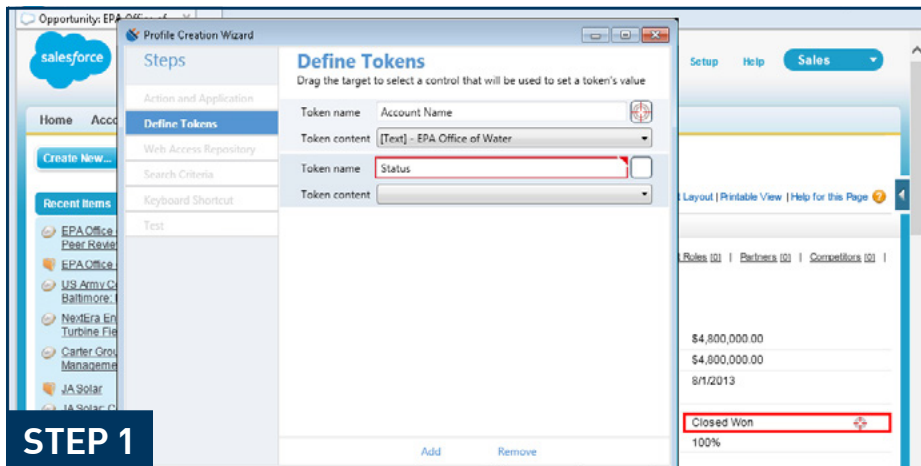
Laserfiche Connector Factsheet

Laserfiche Connector is a wizard-driven tool that provides a way to integrate other applications with Laserfiche without programming.

- Streamline the integration of Laserfiche with line of business applications (e.g., CRM, ERP, geographic information systems, etc.)
- Integrate easily through user-defined hotkeys and embedded icons
- Create searching and scanning profiles that end users can individually customize
- Retrieve information from any integrated application or send it into Laserfiche with a single click

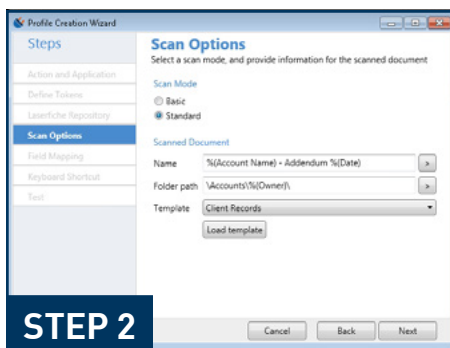
Setting Up Your Integration Takes Only Minutes

Laserfiche Connector makes it easy to search the Laserfiche repository from third-party applications and scan content from these applications into Laserfiche. Here are the three simple steps for configuring scanning through Laserfiche Connector.



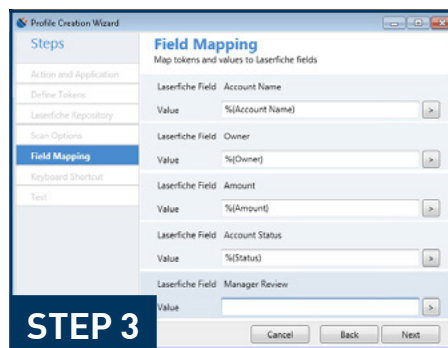
STEP 1

In the set-up wizard, select the data points that will be used in mapping fields.



STEP 2

Select your scanning options.



STEP 3

Map the data points to Laserfiche fields.

Confirmed Applications

- Banner by Ellucian® version 8.6
- Datatel Colleague® version 4.4
- Gmail™ webmail service
- Image Mate Online version 14.10
- Junxure® version 9.2
- Microsoft Dynamics® CRM versions 2011 and 2013
- Microsoft Office® 2007
- Microsoft Office 365™
- Municipity™
- PeopleSoft® version 9.1
- QuickBooks Pro® 2013
- QuickBooks® Enterprise Solutions 2014
- Salesforce® version 15
- SmartOffice® by Ebix
- UtilityPOWERnet by SEDC version 6.0.2

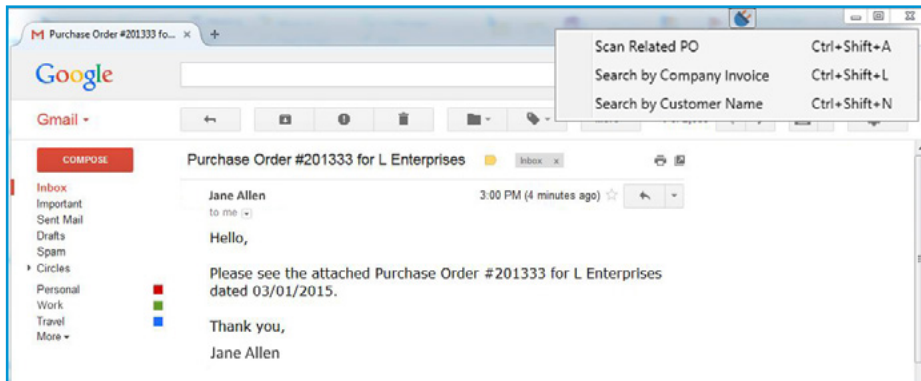
Supported Technologies

- Adobe® AIR®*
- Delphi
- HTML web applications opened with:
 - Microsoft Internet Explorer® 9+
 - Mozilla® Firefox®
 - Google Chrome™ browser
- Java Swing (JRE versions 6 update 21, 7, or 8)
- Microsoft Foundation Classes (MFC)
- .NET Framework
- Microsoft Silverlight®*
- Visual C++®
- Windows Forms
- Windows Presentation Foundation (WPF)

*Supported if the application is compiled with an accessibility support flag.

Search the Laserfiche Repository from Third-Party Applications

- Perform a search in Laserfiche based on readable elements, such as an account number, customer name or date
- Eliminate the need to re-type or copy and paste text from one program to another by using information in the primary application to find related documents in Laserfiche
- Use Laserfiche Connector with any third-party application that displays readable text, including web-based or Windows desktop applications



Search the Laserfiche repository directly from a third-party application like Gmail.

Push Content into Laserfiche Directly from Third-Party Applications

- Automatically launch Laserfiche Scanning from any active application, populate metadata and store the new document in the correct folder
- Launch an application, such as a custom script, directly from another application
- Choose whether actions are triggered from a keyboard shortcut, a button embedded in the application or both