

SIGNiX® Integration for Laserfiche®

Cities Digital's SIGNiX® integration for Laserfiche® allows users to easily send documents stored in a Laserfiche® repository out for signature through the SIGNiX® editor.

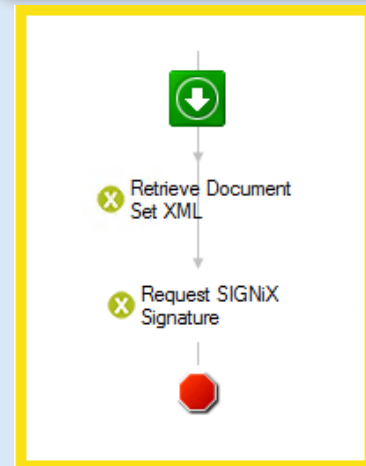
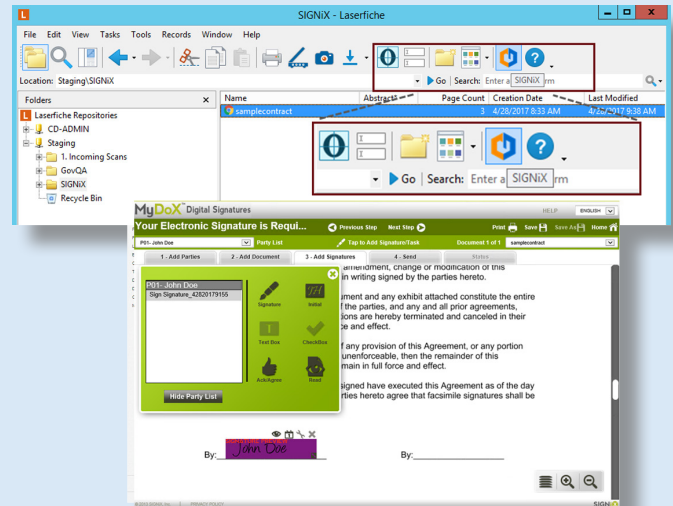
With this integration, users are able to open documents from Laserfiche®, place recipient specific tags (such as signature/initial boxes) in documents and email them out. Recipients will be notified of the signature requirements via email - and once the document is signed and emailed back, both sent and signed documents will then automatically be archived in Laserfiche®, with appropriate metadata applied.

The Integration from Cities Digital allows Laserfiche® users to:

- **Open documents in the SIGNiX® editor from Laserfiche®.**
- **Send documents to one person or to multiple recipients.**
- **Have returned, signed documents automatically archived in Laserfiche®, linked to and stored in the same location with the original document.**
- **Easily incorporate signature processes as part of an internal process/workflow.**
- **Request Signatures using the SIGNiX® Workflow Activity.**
- **Drag Activity into the designer and configure properties the same way users would use other Workflow Activities.**

The Cities Digital integration for SIGNiX® provides organizations with an easy way to sign and send documents for signature without disrupting existing processes. Coupled with Laserfiche Workflow®, the integration can significantly improve efficiency in signature processes.

SIGNiX



SIGNiX® & LASERFICHE®

