

Springbrook Integration for Laserfiche®



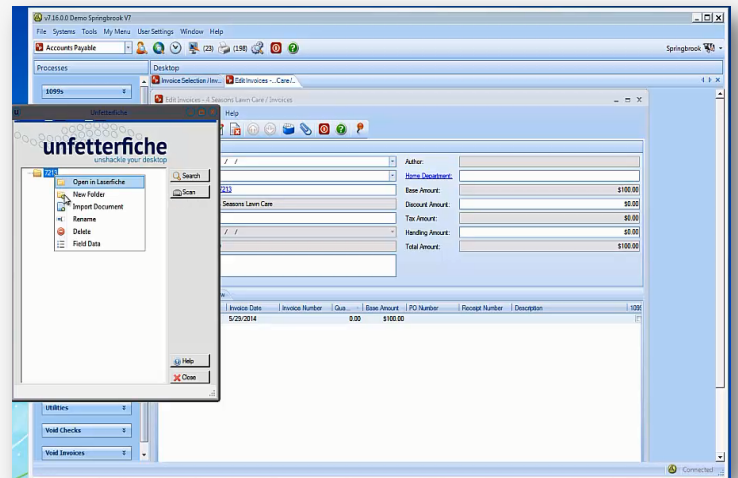
ABOUT

CDI's integration for Springbrook allows for easy interaction between vendor or client records within Springbrook and Laserfiche® folders. With the integration, users are able to synchronize data between the two applications through Cities Digital's Unfetterfiche program.

Invoices created in Springbrook can be automatically stored in configured folders in Laserfiche - and existing images can be called from Laserfiche to Springbrook. Vendor numbers and other information can also be auto-populated into Laserfiche template fields for filing and workflow processing.

Features of CDI's Springbrook Integration with Laserfiche Include:

- Direct link to Laserfiche repositories within the Springbrook application.
- Access to client/vendor-specific documents archived in Laserfiche in all corresponding records within Springbrook.
- The ability to attach scanned documents into Springbrook with automatic archiving into Laserfiche.
- The option to have a template and metadata automatically applied to documents archived in Laserfiche repositories.



Springbrook Version 7.16 or Higher Required for Integration

The Springbrook integration for Laserfiche helps users stay organized and save time. The integration is a crucial link between powerful systems that can lead to improved efficiency and better business processes.